

# Welcome to The World Of Platinum

## State-of-art outdoor LED display

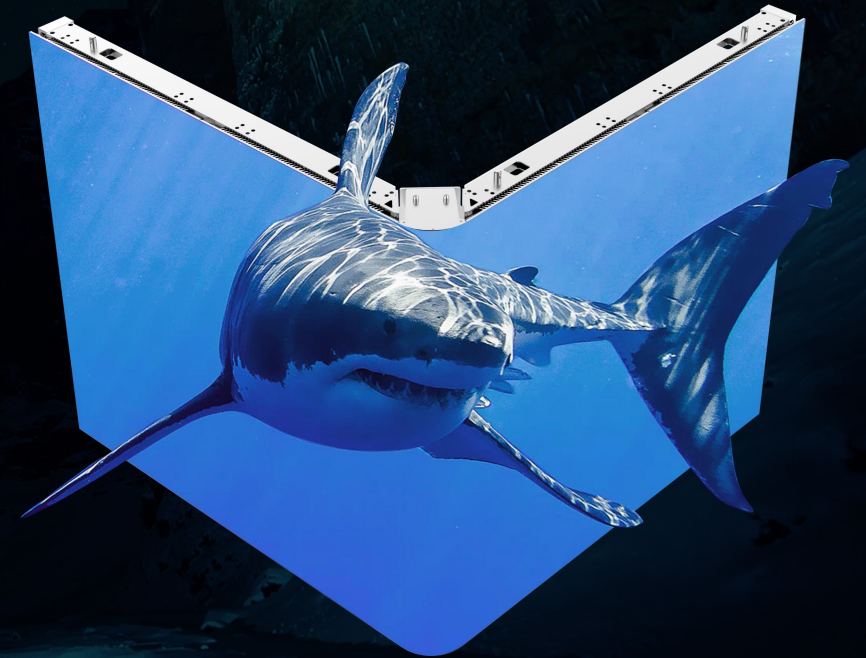
**Sold over 500,000.00 pcs in 3 years. Indurtsy-best record ever!**

**Quality Second to None!**



**UNITEDSIGNS**

Smarter. Brighter. Greener.





**1**

Landmark Project Winner


**2**

Platinum Introduction

**3**

Test and Certificates





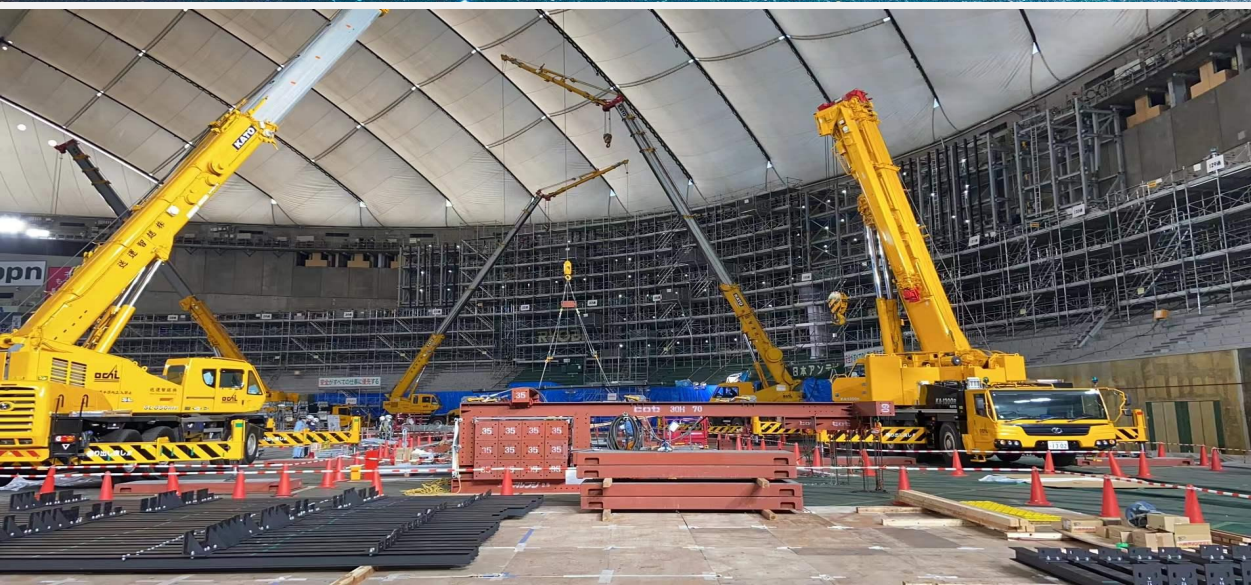
# Part 1 Landmark Project Winner





1, Landmark Project Winner

1000 square meter P10 led display in Tokyo Dome







1, Landmark Project Winner

M&T Bank Stadium ,  
P10 Sport LED, Baltimore, Maryland.  
Model: PT Sport P

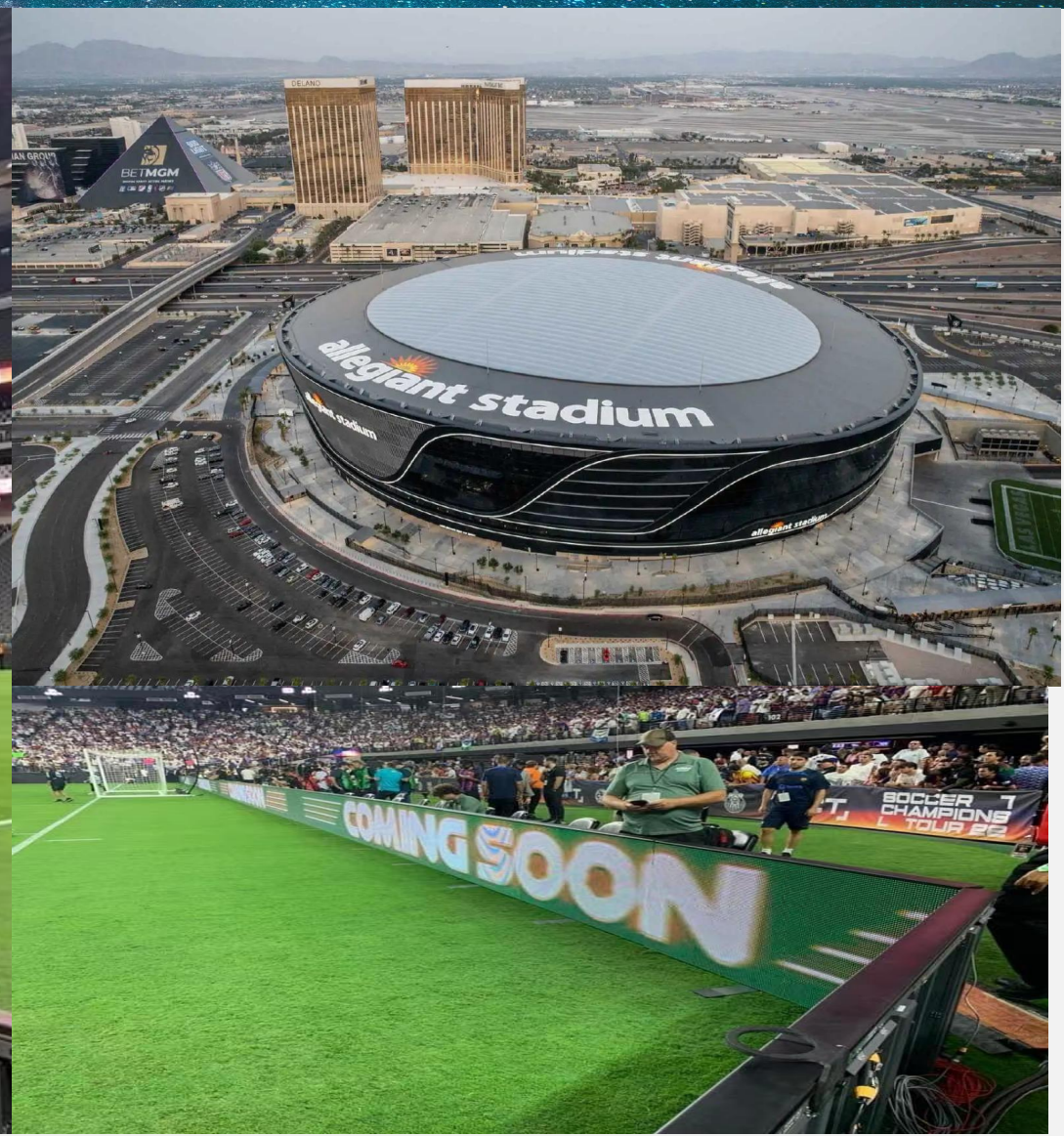
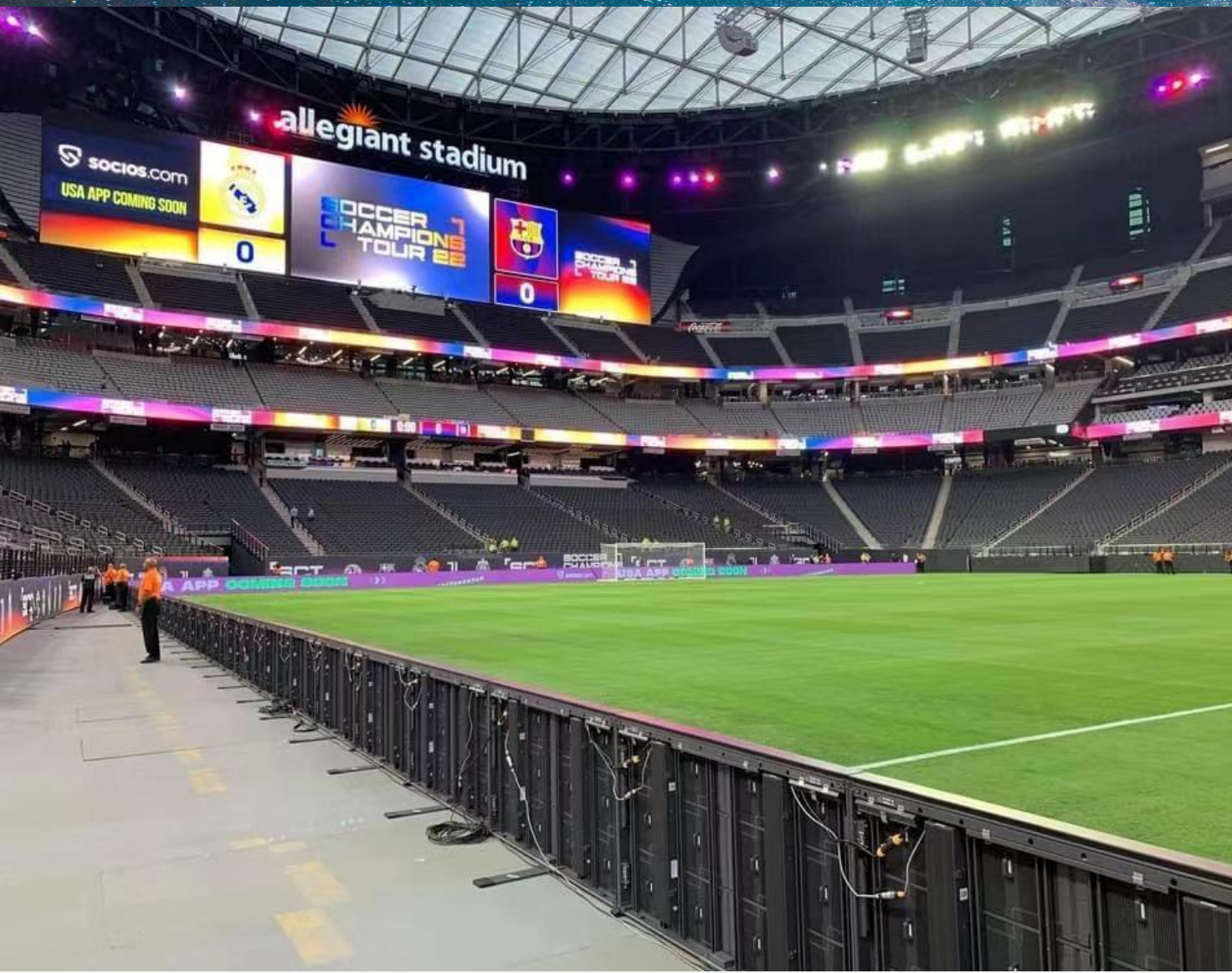






1, Landmark Project Winner

800 square meter P10 led display at Allegiant Stadium, Les Vegas







1, Landmark Project Winner

150ft \*60ft P10 led display  
at casino Muckleshoot, Seattle.







1, Landmark Project Winner

40ft \*15ft P8 led display Braly  
Stadium, Florence, Alabama.







1, Landmark Project Winner

100sqm double side P10  
in New Hampshire USA







1, Landmark Project Winner

P10 led display  
in Charlotte, USA

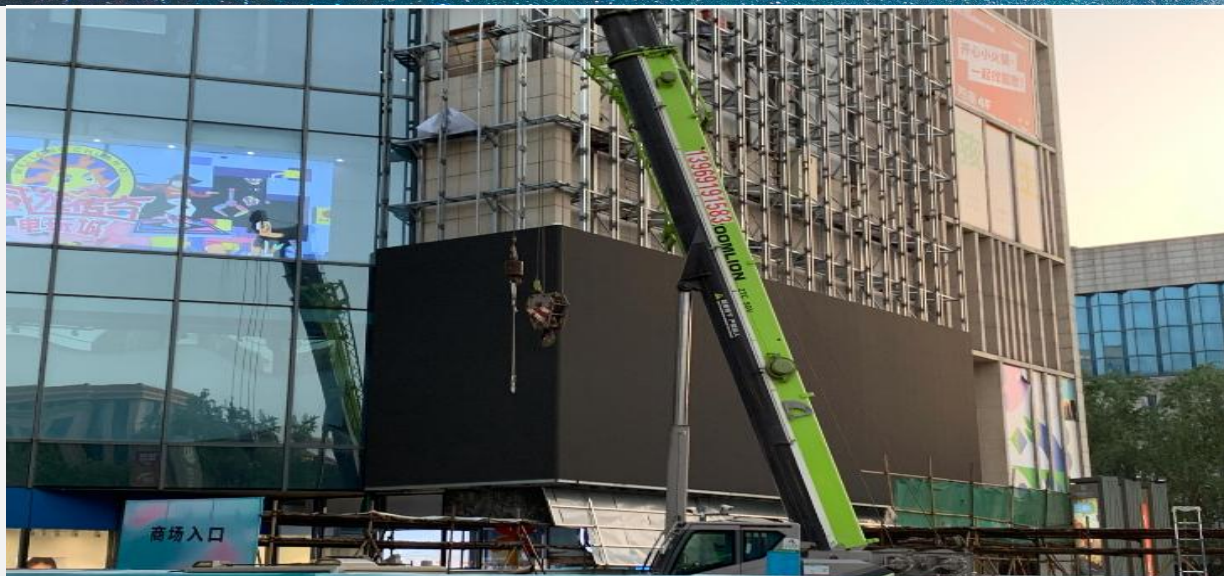






1, Landmark Project Winner

490sqm P10 Jinan  
Shimao Plaza, China







# Part 2

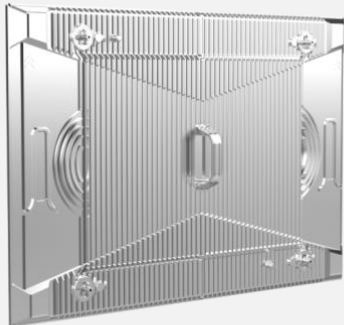
## Platinum Introduction







## 2, Product Introduction -- Basic Features



Pixel Pitch: 5.7mm, 6.67mm, 8mm, 10mm.

Panel size: 960\*960mm, 960\*640mm, 960\*1280mm,  
1440\*960mm, 1440\*640mm

Panel material: Aluminum

Module size: 480\*320mm

Module material: Aluminum shell

Brightness: 6500-10000nits

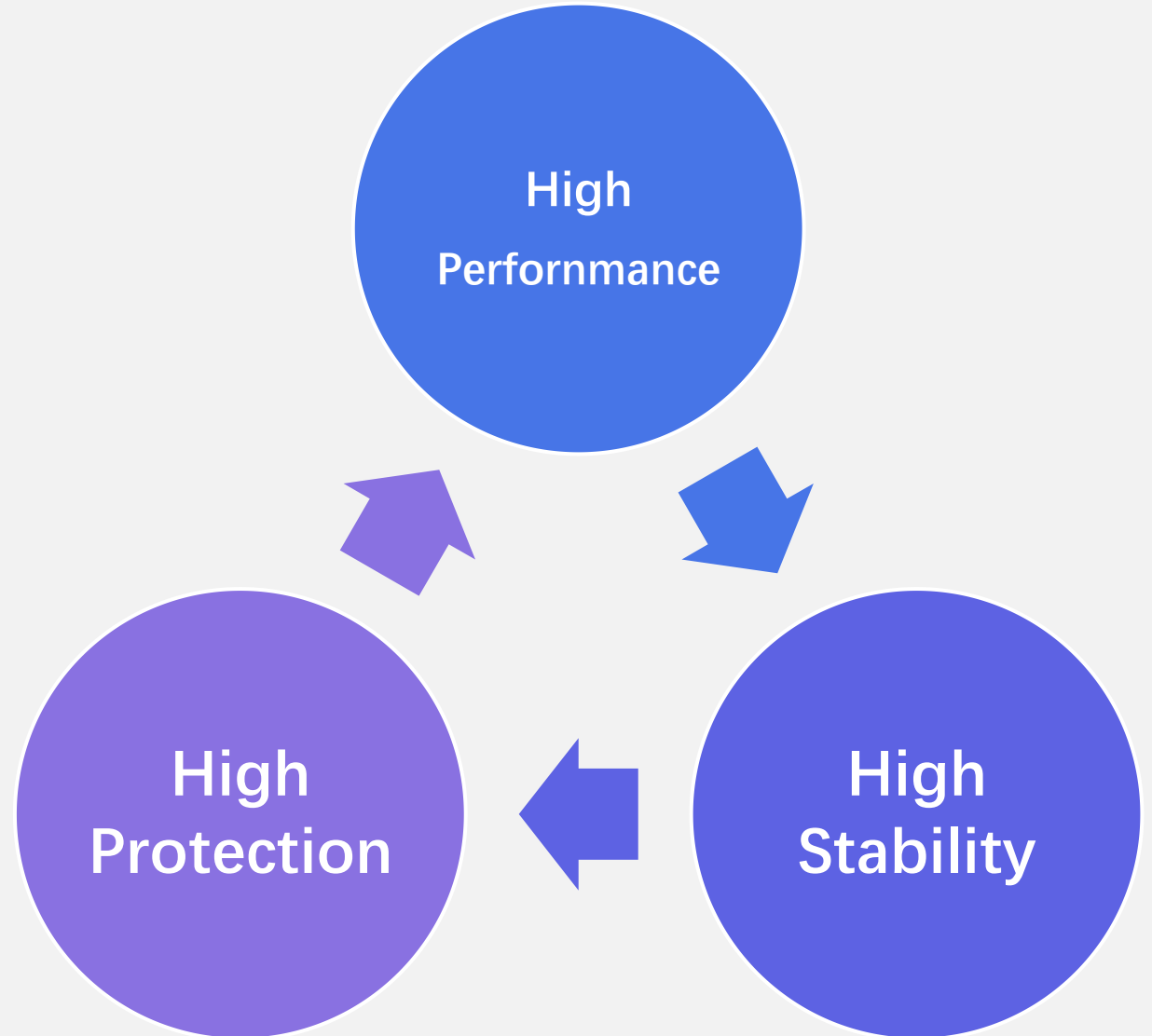
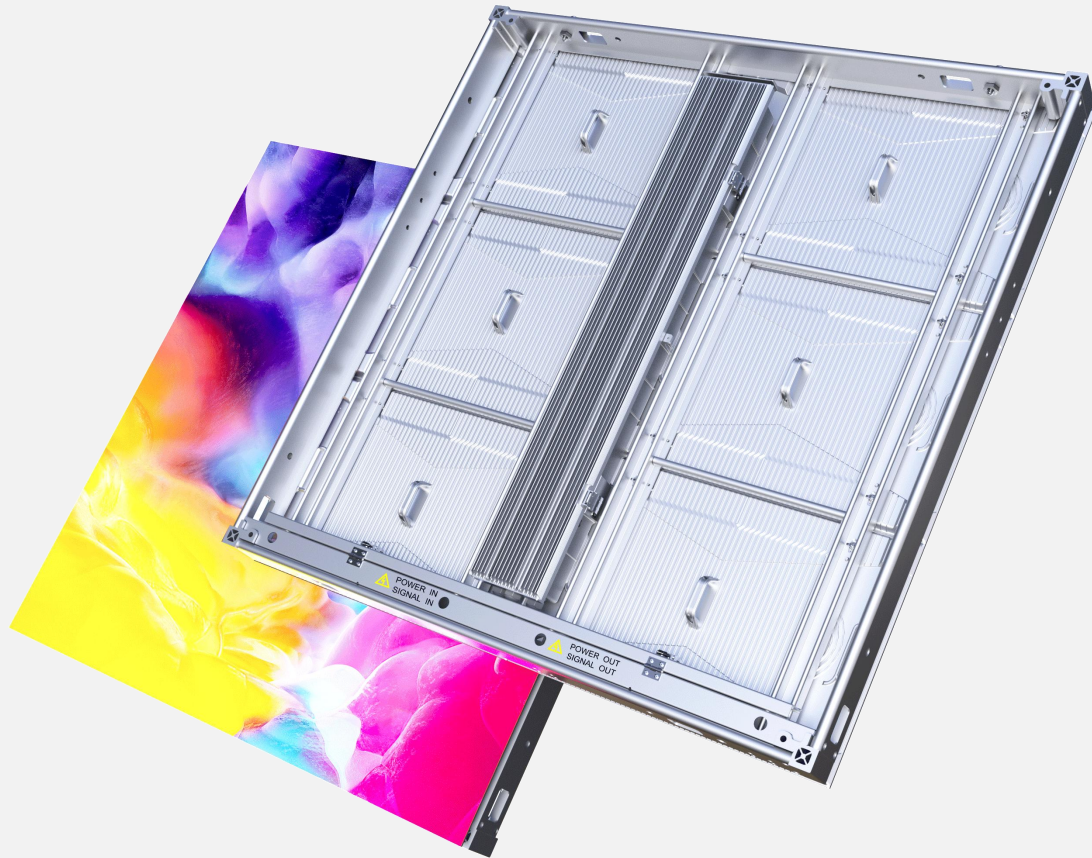
Protection level: IP66, Refresh rate: 3840HZ

Working temperature: -40~+65 degrees





## 2, Product Introduction -- Advantages







# High Performance



**10,000nits**

Accurate electricity distribution  
for RGB LED chips to reach 10000nits,  
High exposure of your ads,  
Long-lasting brightness

**12000:1  
contrast**

Outdoor black LED+High shadow mask  
sharp image&video display



**>3840Hz**

Reduce glint for camera;  
Achieve the best visual effect

**150W/Sqm**

50% lower power consumption for electricity  
cost saving VS traditional design





# High Stability



## Hard Connection

No flat cables between module and cabinet, more stable



## Hidden Cables

Power and data cables covered at the bottom of the panel, protect cables against damage

## Heat dissipation

More than 90% surface with aluminum for better heat dissipation



## Power Backup

Double security to ensure the stable working status





# High Protection



## Front&Rear Service

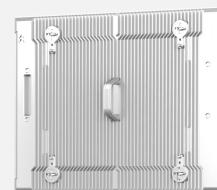
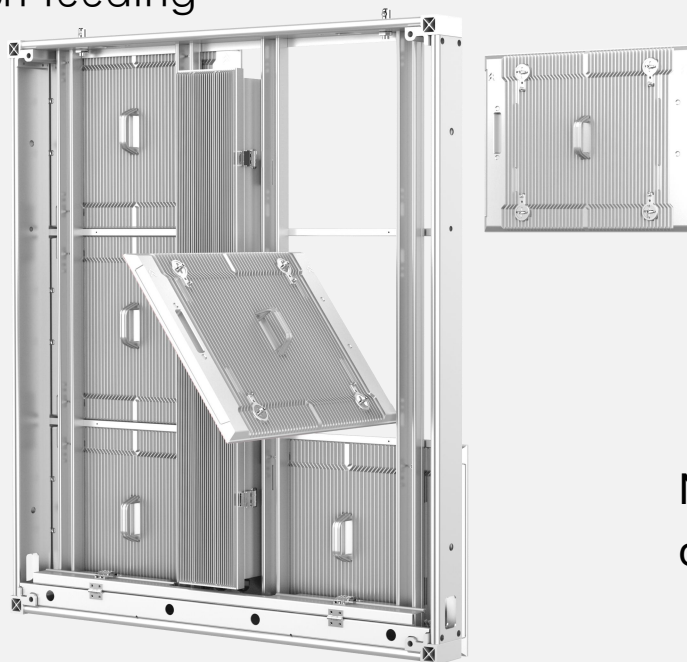
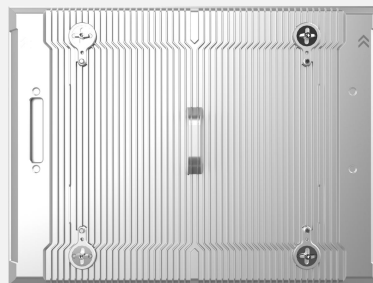
All modules and power box can be removed through front and rear access

Com-cathode branch feeding



## IP66

IP66 Waterproof approved by TUV  
IP68 Waterproof LED module



## 5VB

5VB approved by TUV with Aluminum module back shell



## 90% Recyclable

No. 1 environmental protection design in led display industry







# High Energy-Efficiency, Saves Electricity



**Chip voltage dividing    Commond cathode    High-efficiency power supply    Faster heat dissipation**

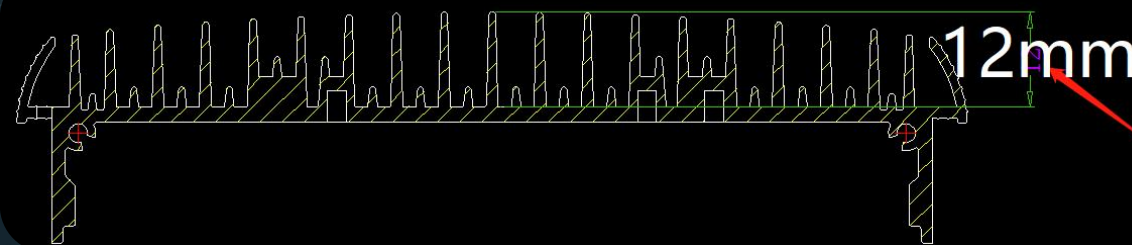
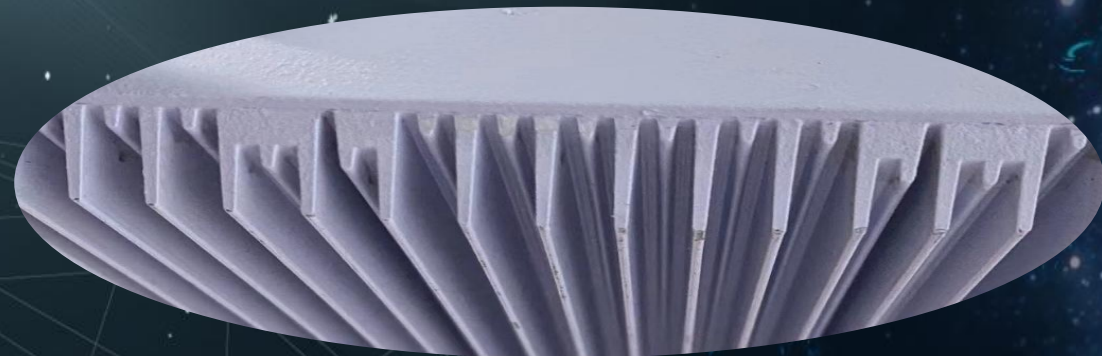
Save Power Consumption on 100 SQM LED Display	Platinum P10 7500NIT	Ordinary P10 6000NIT
(kWh) = (kW) * (h)	Average 150W/SQM	Average 300W/SQM
1 Day*100SQM	360(KW.h)	
1 Year*100SQM	100,000(KW.h)	
3 Years*100SQM	300,000(KW.h)	
5 Years*100SQM	500,000(KW.h)	
\$0.15/KW.h	\$0.15/KW.h*500,000KW.h = <b>\$75,000</b>	





## 2, Product Introduction -- Game-changer Details

Heat sink  
structure  
on the  
modules  
and  
powerbox



Wave structure on power&module shells  
This heat sink double enlarge heat dissipation  
surface, Power box heat sink, 12mm in depth  
Best in heat dissipation. No fans needed, self-  
cooling.





## 2, Product Introduction -- Game-changer Details



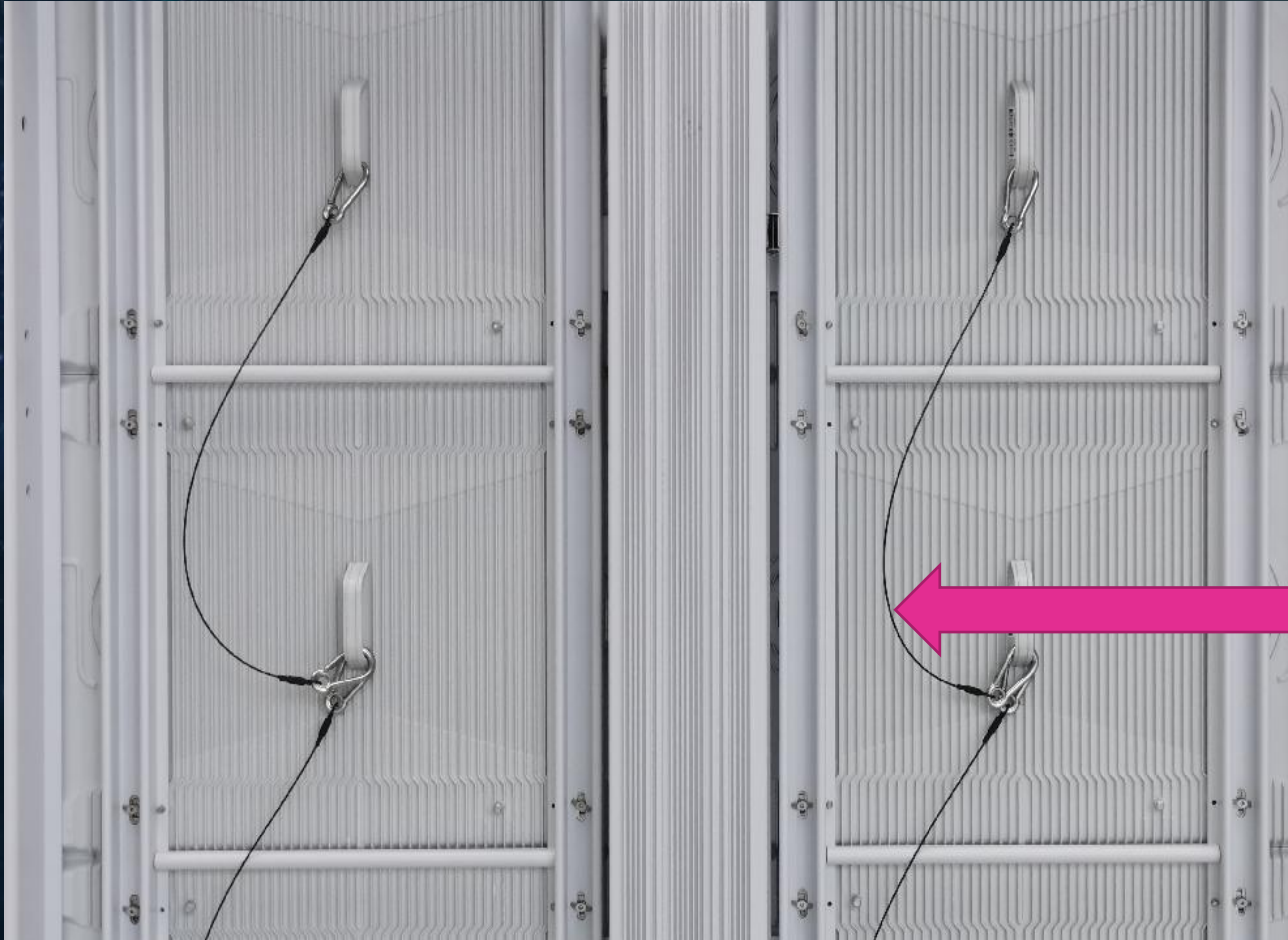
1. To make it clean and neat on the back of the cabinets
2. To avoid the damages by the animals like, mouse, bird...
3. To extend the working life of the cables
- 4, Equipped with quick connectors for power & signal cable, no wiring work.







## 2, Product Introduction -- Game-changer Details



Safety rope design,  
when doing maintenance, your worker no  
need to worry about unexpected module  
dropping off from the cabinets up high, it's  
safe.

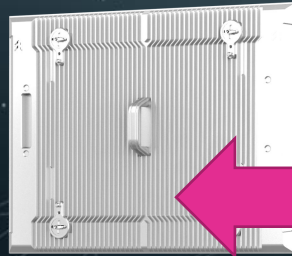




## 2, Product Introduction -- Game-changer Details



Removing the module from the back of the cabinet  
**-Module rear maintenance**



Removing the module from the front of the cabinet  
**-Module front maintenance**



Power box can be removed from the front and rear side







## 2, Product Introduction -- Game-changer Details

**Plug-in Design, no flat cable. modules and HUB card are directly connected. Less cable, more stable, gold-pated pins built for high stability performance.**

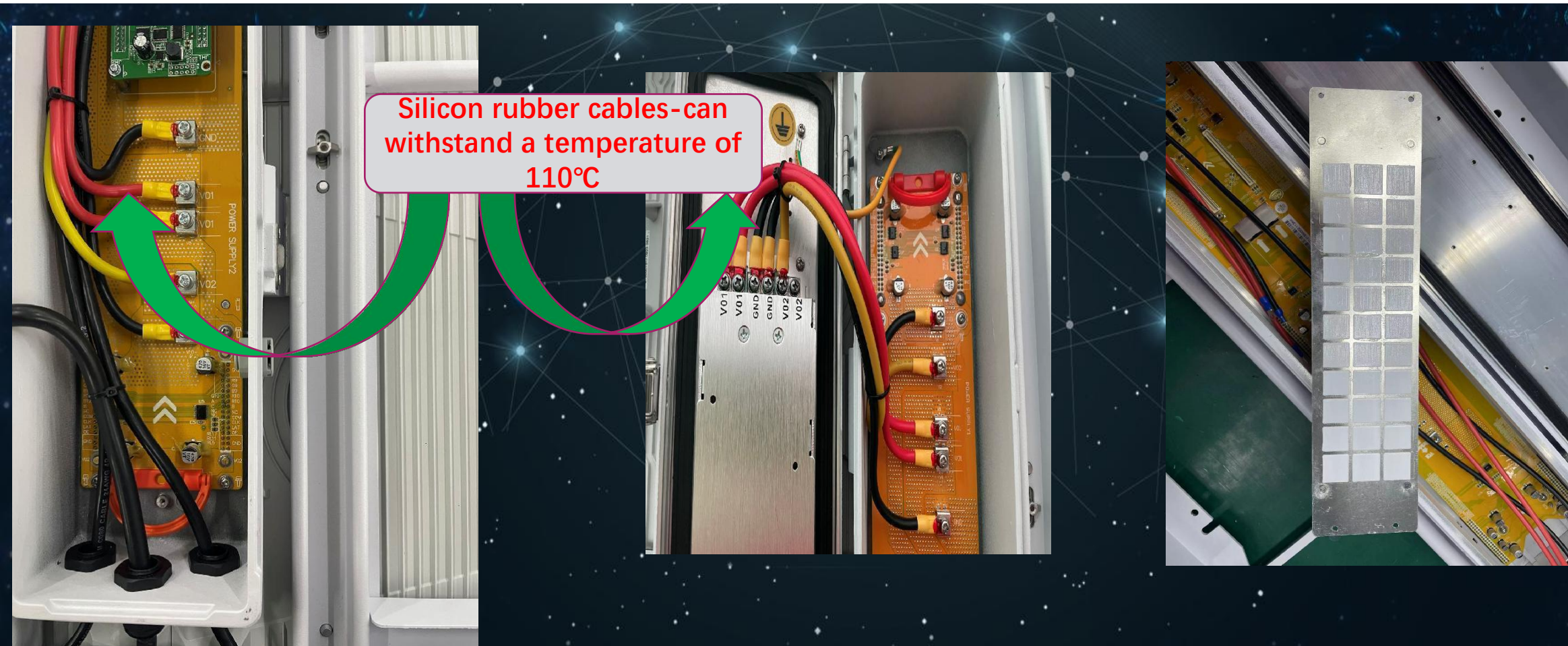






## 2, Product Introduction -- Game-changer Details

**Simple interior design, durable cables, power supply with heat sink paste increasing the heat-dissipation ability**



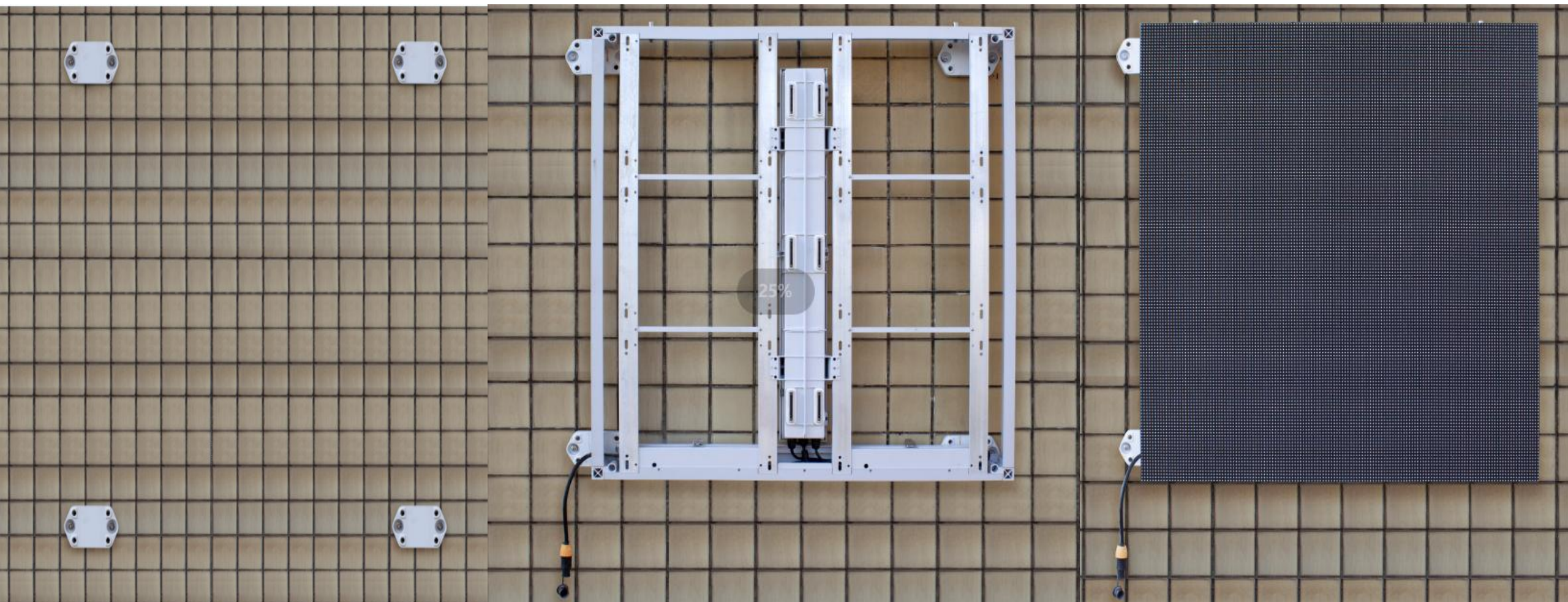




## 2, Product Introduction -- Game-changer Details



High accuracy and light weight cabinet, cabinet can be mounted directly to wall. A frame-free solution. Saving a lot of metal structure cost.

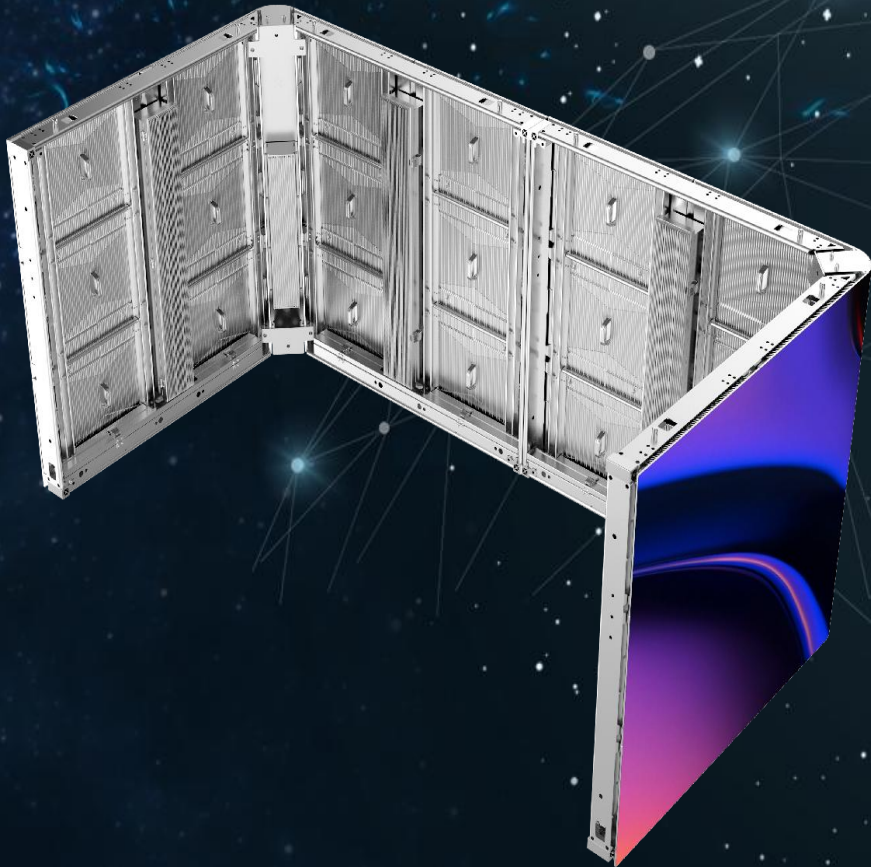






## 2, Product Introduction -- Game-changer Details

VR Corner Panel Design is available, seamless splicing.







# 3, Product Specifications



## Specifications

Pixel Pitch(mm)	P6.67	P8	P10
Pixel Density (dot/sqm)	22500	14400	10000
LED sealing Type	SMD2727	SMD3535	SMD3535
Module Size (mm * mm)	480*320	480*320	480*320
Module Resolution (PX* PX)	72*48	60*40	48*32
Brightness (nit)	6500-9500	6500-10000	6500-10000
Grey Scale (bit)	≥14bit	≥14bit	≥14bit
Refresh Rate (Hz)	3840	3840	3840
Cabinet Size (mm * mm)	960*960 960*640 960*1280 1440*960 1440*640	960*960 960*640 960*1280 1440*960 1440*640	960*960 960*640 960*1280 1440*960 1440*640
Cabinet Weight (Kg)	30kg/sqm	30kg/sqm	30kg/sqm
Cabinet Thickness(mm)	102	102	102
Input Voltage (V)	AC90-260V	AC90-260V	AC90-260V
Maintanence	Full front&rear	Full front&rear	Full front&rear
Working Temperature (℃)	-40℃~ 60℃	-40℃~ 60℃	-40℃~ 60℃
Waterproof Level Front &Rear	IP66	IP66	IP66
Horizontal Viewing Angle (Deg)	180	180	180
Vertical Viewing Angle (Deg)	80	90	90
Maximum Power Consumption (W)	580W/sqm	550W/sqm	550W/sqm
Average Power Consumption (W)	175/sqm	165/sqm	165/sqm
Certificate	CE(LVD, EMC), FCC, ETL, CB,ROHS	CE(LVD, EMC), FCC, ETL, CB,ROHS	CE(LVD, EMC), FCC, ETL, CB,ROHS



# Variation of Platinum



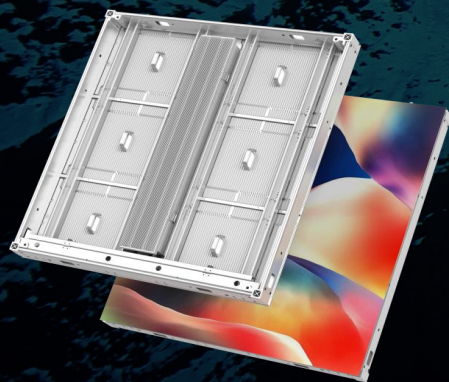
**Platinum S**  
500\*100mm cabinet  
P2.9 P3.9 P4.8



**Diamond Series**  
500\*500mm cabinet  
P1.9 P2.9



**Platinum Sport**  
1600\*900mm cabinet  
P10



**Platinum Pro**  
800\*1200mm cabinet  
P6.67 P10



**PTSF**  
1000\*1000mm cabinet  
P3.9 P4.8 P5.9 P6.2 P8.3 P10.4





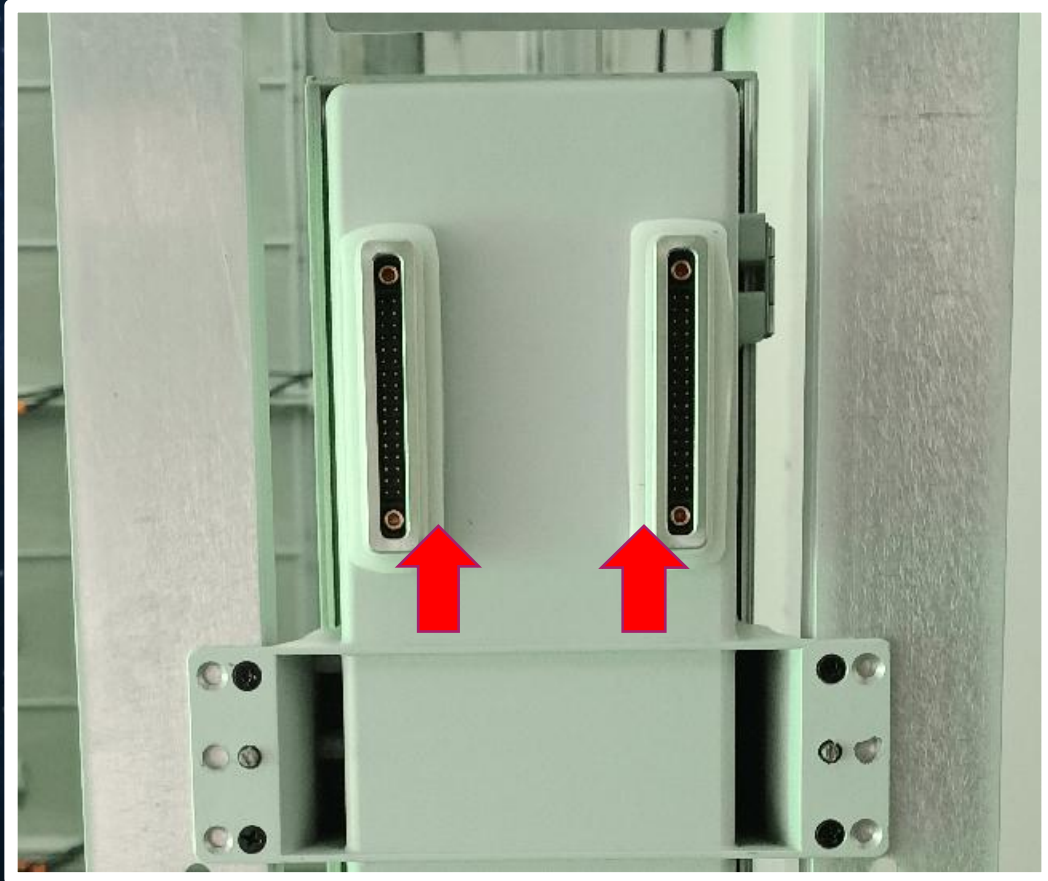
# Part 3

## Test and Certificates





## 4, Test & Certificates



1.The power box has waterproof gasket used for car door, totally safe without water leak.

2.Each Pins connector has 2 durable gaskets at the interface, double insurance of waterproof.





## Test & Certificates



**Strict waterproof test, IP66 for both sides of cabinets.**



**Each of our cabinet will go through strict waterproof test. Cabinet front and back side both IP66 waterproof.**





# Test & Certificates



All kinds of advanced machines to do strict tests



We do strictly test: Waterproof test-High and low temperature test, Salt spray test, Constant temperature & humidity test and Vibration test

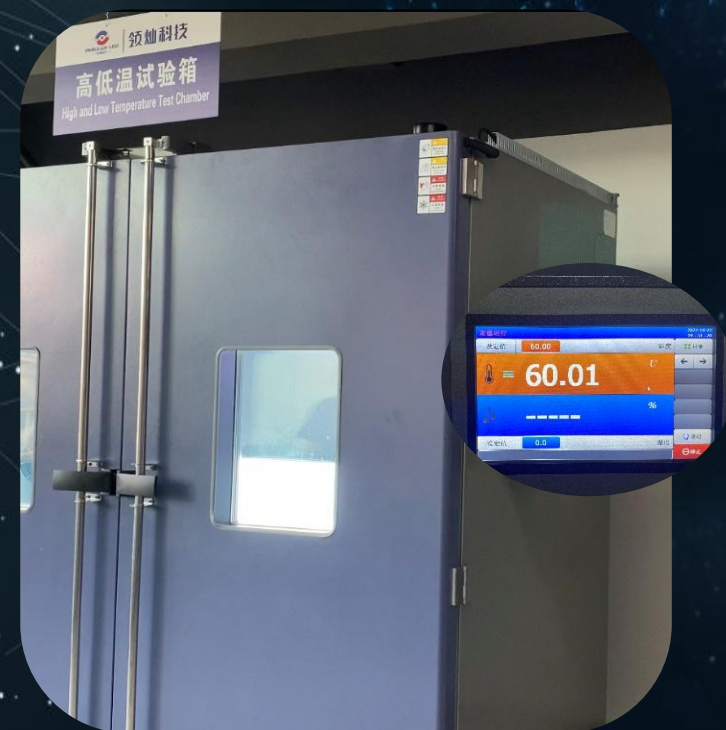




# Test & Certificates



**-40°C~+60 °C (-104°F~+140°F ) Work stably in low temperature / high temperature**







# Test & Certificates



## Quality Qualified



The all aluminum design means that Platinum enjoys unmatched durability against the elements and dissipates heat without the need for fans. Fewer parts means fewer points of failure.

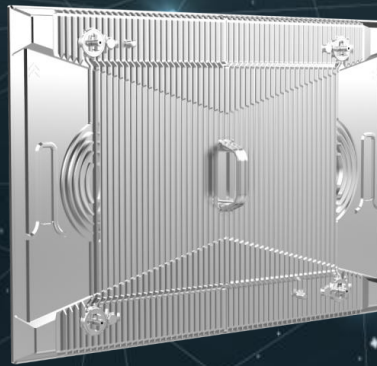
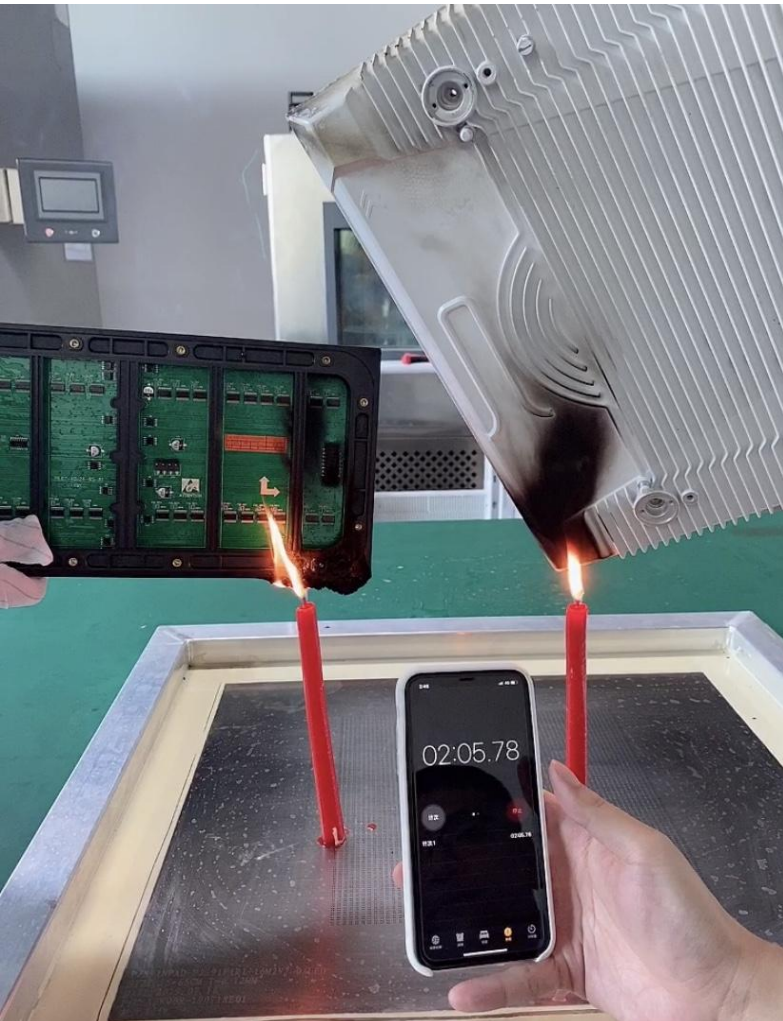




# Test & Certificates



## 5VB High Standard of Fireproof Aluminum LED Module



Aluminum module no damage



Platic module broken





The background of the slide is a dark, atmospheric photograph of a cave interior. The walls are rugged and textured, with some light reflecting off the surfaces. At the bottom center, a small silhouette of a person stands, holding a flashlight that illuminates the ground in front of them. The overall mood is mysterious and adventurous.

Making fabulous products!

THANK YOU

In Pursuit of Perfectionism!